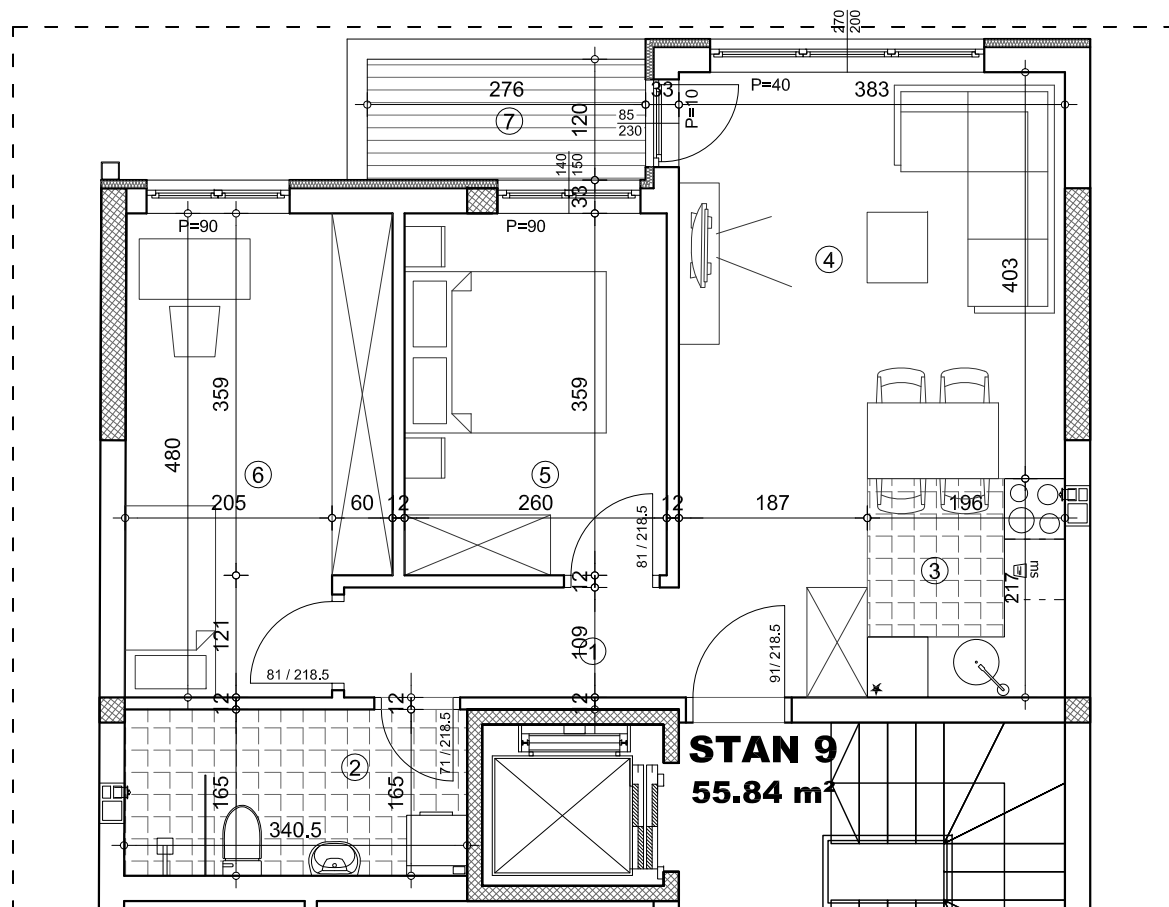


**OSNOVA STANA 1:75**

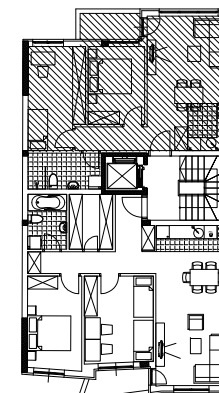


**STAN 9 - trosoban**

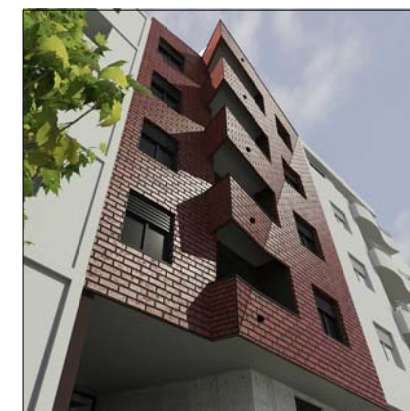
	pod	površina
<b>1 ULAZ/HODNIK</b>	parket	<b>5.66 m<sup>2</sup></b>
<b>2 KUPATILO</b>	ker.pl.	<b>5.62 m<sup>2</sup></b>
<b>3 KUHINJA</b>	ker.pl.	<b>4.21 m<sup>2</sup></b>
<b>4 DNEVNA SOBA</b>	parket	<b>17.45 m<sup>2</sup></b>
<b>5 SOBA</b>	parket	<b>9.33 m<sup>2</sup></b>
<b>6 SOBA</b>	parket	<b>11.99 m<sup>2</sup></b>
<b>7 TERASA</b>	ker.pl.	<b>3.31 m<sup>2</sup></b>
<b>UKUPNO:</b>		<b>57.56 m<sup>2</sup></b>

**UKUPNO REDUKOVANO -3%: 55.84 m<sup>2</sup>**

**OSNOVA 3.SPRAATA**



ulica



**ulica Dostojevskog 12**

**3.SPRAAT/STAN 9**